

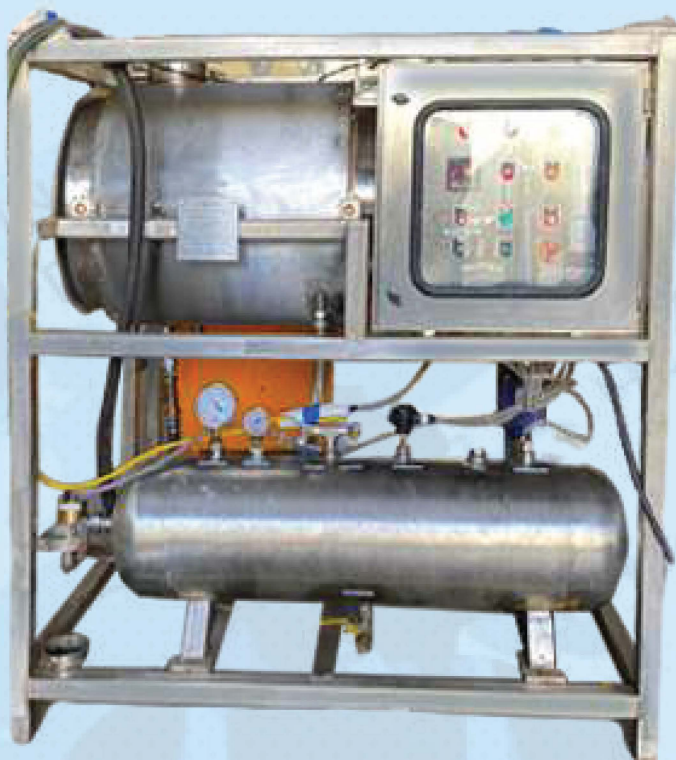


# SYNERGY

INNOVATIVE DIVING EQUIPMENT TRADING LLC

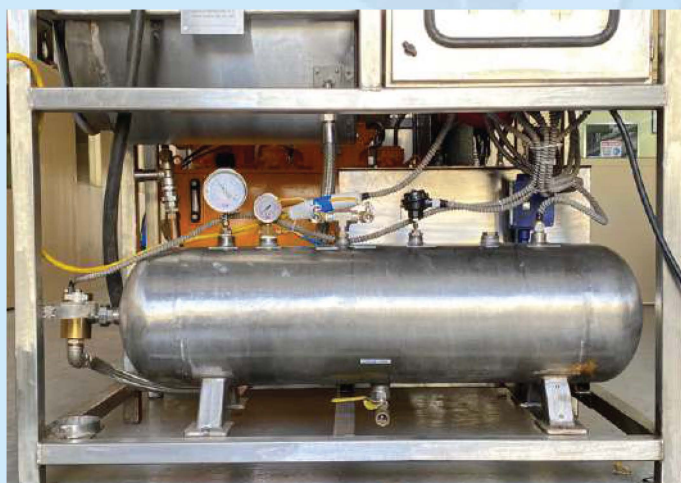
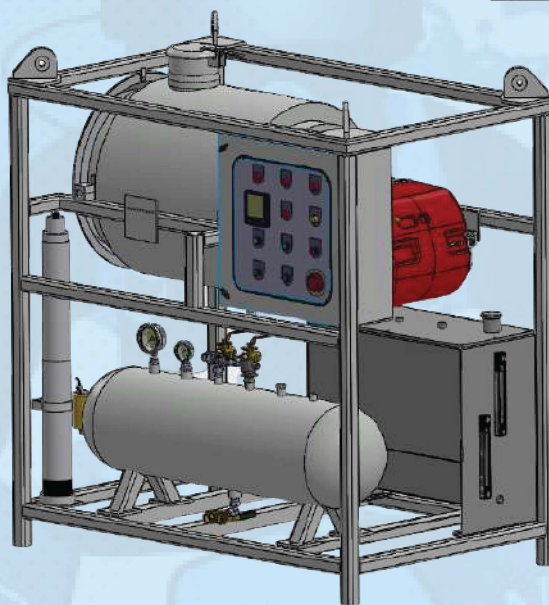
INSPIRING • ENGINEERING • INNOVATION

UAE • UK • INDIA • AZERBAIJAN

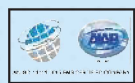


## SYNERGY DIESEL DIVER HOT WATER MACHINE (SY-DHWU-SB38S)

BELL SYNERGY # SY-DHWU-SB38S







## SYNERGY DIESEL DIVER HOT WATER MACHINE (SY-DHWU-SB38S)

### Description:

The Model: DHWU-SB38S is one of the most reliable and rugged diesel fired divers hot water units available. Dhwu-sb38s can provide hot water for up to 2 divers down to 150msw. These units housed in a stainless steel frame. The unit comes with digital control panel in a stainless steel enclosure and a remote display and emergency shut-down panel that can be located in dive control. A stainless steel submersible pump is provided with the unit. The submersible connecting cables, sockets and hoses (20 meters) are part of the standard supply. The unit can be supplied with any power supply configuration optionally with multiple power configuration (ie. 110/220/440 v and 50/60 hz, & dual option)

| Sr. | Recommended usage                         |
|-----|---|
| 1   | Heating of air diver suit                 |
| 2   | Heating of Mix gas diver suit             |
| 3   | Heating of Bell diving system             |
| 4   | Backup or redundancy diver heating system |
| 5   | Backup or redundancy bell heating system  |

| Sr | Specifications                                |
|----|---|
| 1  | Flow 30-40 lpm                                |
| 2  | Heating capacity-385,000 btu (Approx.)        |
| 3  | Stainless steel heatingcoil assembly          |
| 4  | Stainless steel submersible pump              |
| 5  | Stainless steel coil wrap                     |
| 6  | Oil fired two-stage burner for better control |
| 7  | Burner cover                                  |
| 8  | Fuel tank stainless steel 120 liters          |
| 9  | 100 Liters mixing tank                        |
| 10 | 4 x lifting eyes & certified lifting sling    |
| 11 | Dimensions: 1.5m x 1m x 1.7m (IXbXh)          |

| Sr. | Safety features                                      |
|-----|--|
| 1   | Burner cover   |
| 2   | Stainless steel double door electrical enclosure     |
| 3   | Fuel pressure gauge                                  |
| 4   | Electronic temperature controller 2 stage.           |
| 5   | High temperature secondary thermostat                |
| 6   | Low flow switch                                      |
| 7   | High & low pressure switch                           |
| 8   | Remote temperature display and Emergency stop switch |
| 9   | Tank safety relief valve                             |

| Certifications | Provided with each hot water machine                     |
|----------------|--|
| International  | IMCA D018 / D023 / D024                                  |
| Manufacturer   | Production, testing and electrical certificates          |
| Class          | Bureau Veritas Lifting test certificates (including MPI) |
| Warranty       | 12 month / 3000 hour standard warranty                   |

### ORDERING INFORMATION

| Sr. | Part Number    | Description              |
|-----|----------------|--------------------------|
| 1   | SY-SB-DHWU-3SS | DIESEL HOT WATER MACHINE |









# SYNERGY

INNOVATIVE DIVING EQUIPMENT TRADING LLC

INSPIRING • ENGINEERING • INNOVATION

UAE • UK • INDIA • AZERBAIJAN




## Contact us



29th Street, Amman Road, Behind Al Huraiz Est. For Industry,  
Al Qusais, Industrial Area – 1,  
Dubai, United Arab Emirates



Tel : 009714 2580533 




Fax : 009714 2580534 



UAE : 00971505648178 



UK : 00447951966260 



Website : [www.synergiequipment.com](http://www.synergiequipment.com)



Email : [ram@synergiequipment.com](mailto:ram@synergiequipment.com)



For Sale : [info@synergiequipment.com](mailto:info@synergiequipment.com)

**SYNERGY**  
INNOVATIVE DIVING & EQUIPMENT TRADING LLC  
INSPIRING • ENGINEERING • INNOVATION

# CORE TEAM

[WWW.SYNERGIEQUIPMENT.COM](http://WWW.SYNERGIEQUIPMENT.COM)



**SYNERGY TEAMWORK MAKES THE DREAM WORK**

